

www.ersatzteil-service.de

www.ersatzteilplan.de

IBEA

Modello n. Serie dal n.
IB-5320F 001

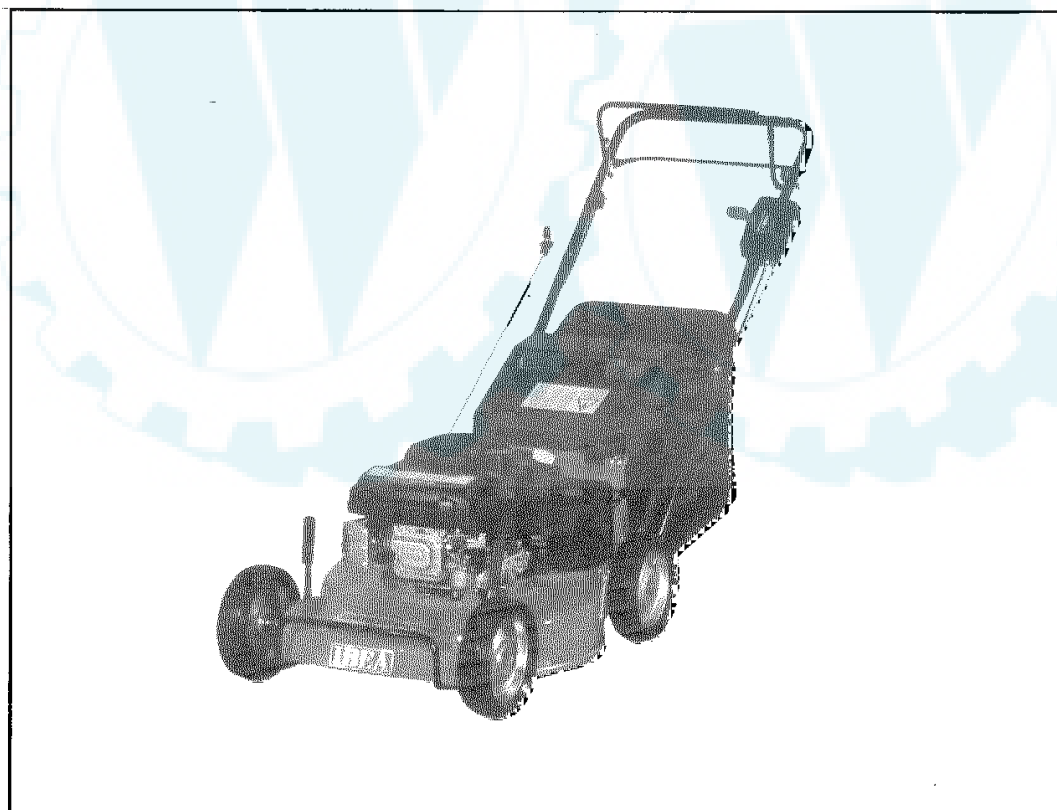
Stampato n. P5090158

LISTA RICAMBI

SPARE PART LIST

ERSATZTEILLISTE

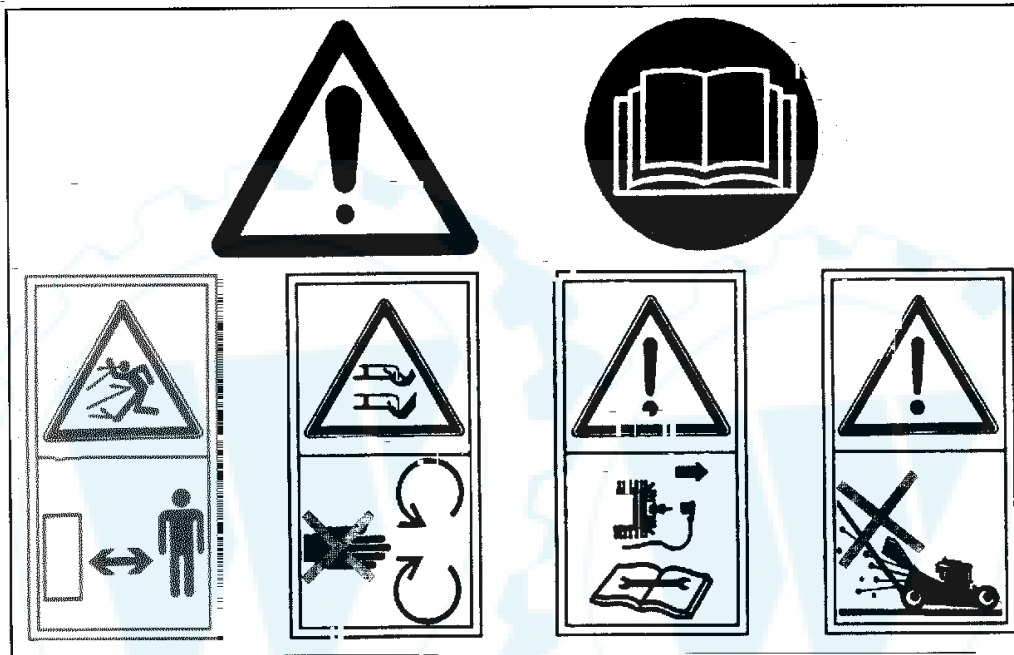
LISTE DES PIECES DE RECHANGE



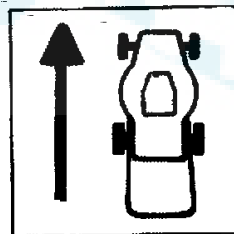
SERIE 530 GARDEN PRO 3 M

[Ihr Ersatzteilspezialist im Internet](#)

REF. N°	PART. N°	QTY	DESCRIZIONE	DESCRIPTION	DESCRIPTION	BESCHREIBUNG
1	P5140204	1	DECALCO	DECAL	MARQUAGE	AUFKLEBER
2	P5140203	1	DECALCO	DECAL	MARQUAGE	AUFKLEBER
3	P5140186	1	DECALCO	DECAL	MARQUAGE	AUFKLEBER
4	P5140334	1	DECALCO	DECAL	MARQUAGE	AUFKLEBER
5	P5140202	1	DECALCO	DECAL	MARQUAGE	AUFKLEBER
6	P5140573	1	DECALCO	DECAL	MARQUAGE	AUFKLEBER
7	P5140574	1	DECALCO	DECAL	MARQUAGE	AUFKLEBER
*	P5110016	1	CHIAVE	KEY	CLEF	SCHLÜSSEL
*	P5110008	1	CHIAVE	KEY	CLEF	SCHLÜSSEL
*	P5090157	1	MANUALE ISTRUZIONI	OPERATOR'S MANUAL	MODE D'EMPLOI	BEDIENUNGSANLEITUNG



①



⑦

③



⑥



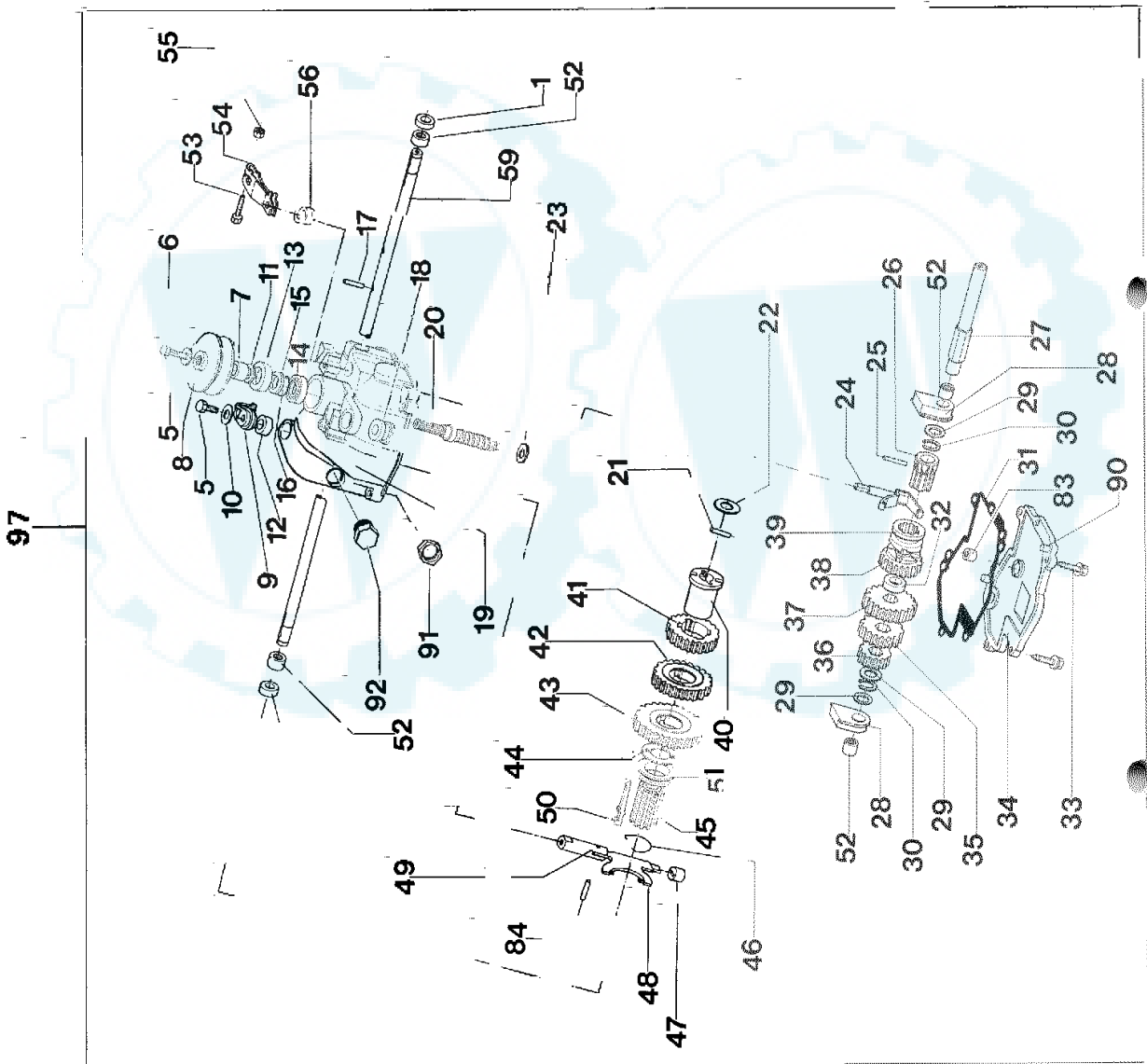
②

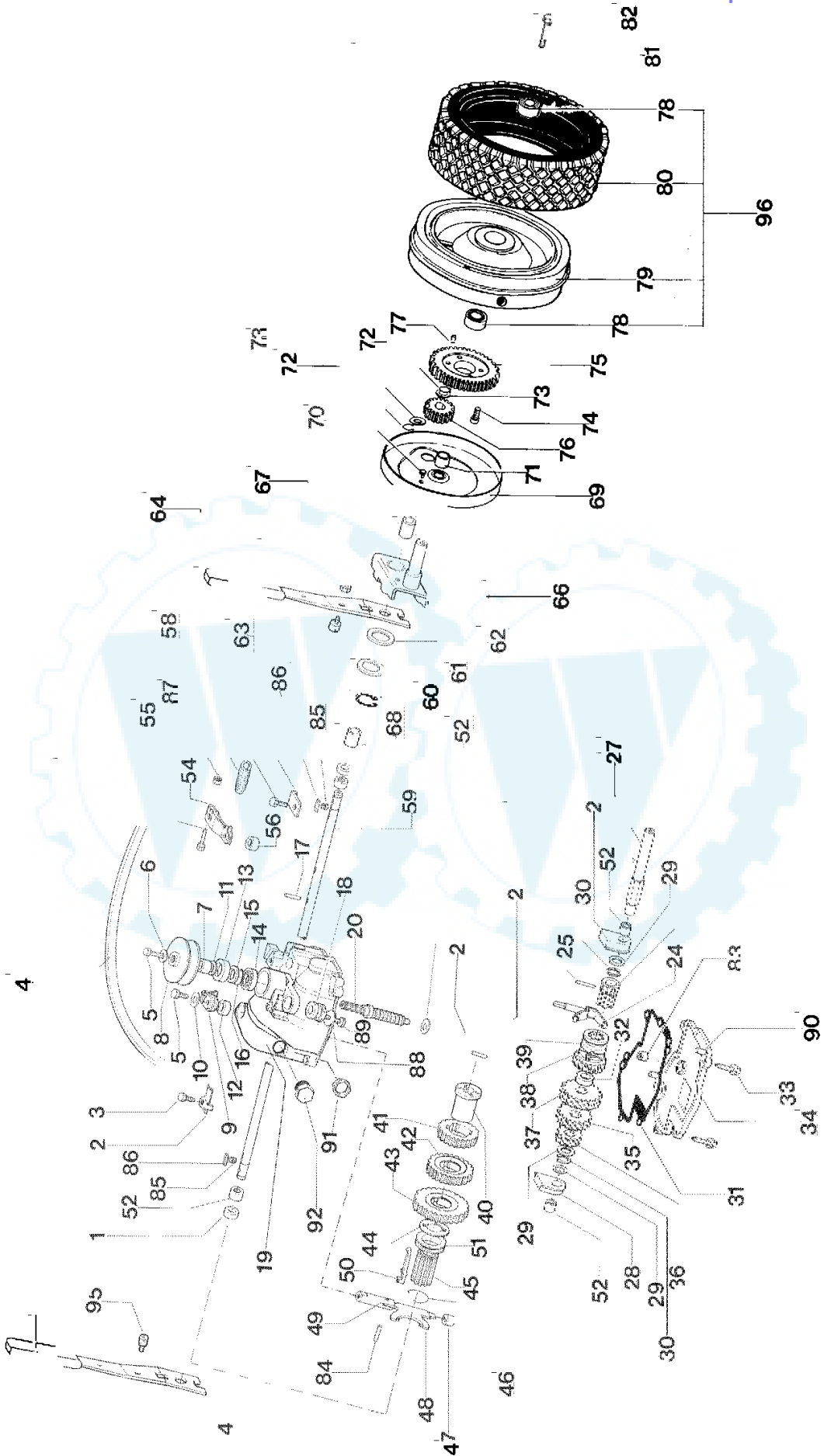


REF. N°	PART. N°	QTY	DESCRIZIONE	DESCRIPTION	DESCRIPTION	BESCHREIBUNG
1	P2020187	1	SCIVOLO ERBA	CHUTE DOOR	DÉFLECTEUR	LEITBLECH
2	P00011098	1	TELAIO CESTELLO	BAG FRAME	MONTURE	GESTELL
3	P2020149	1	DEFLETTORE	GRASS DEFLECTOR	DÉFLECTEUR	SCHUTZ
4	P3160043	1	SACCO	GRASS BAG	SAC DE RAMASSAGE	GRASFANGSACK
5	P1050011	6	DADO	NUT	ÉCROU	MUTTER
6	P02070652	1	TUBO	TUBE	TUBE	ROHR
7	P2020142	2	TAPPO	PLUG	BOUCHON	PFROPFEN
8	P02070252	2	STEGOLA INF.	LOWER HANDLEBAR	GUIDON INFÉRIEUR	HOLMUNTERTEIL
9	P1010120	2	VITE	SCREW	VIS	SCHRAUBE
10	P3040145	2	DISTANZIALE	SPACER	DOUILLE	SCHIBE
11			MOTORE	ENGINE	MOTEUR	MOTOR
12	P02070752		TUBO	TUBE	TUBE	ROHR
13	P3140238	2	DISTANZIALE	SPACER	DOUILLE	ABSTANDSTÜCK
14	P3020027	2	MOLLA PORTELLO	SPRING	RESSORT	FEDER
15	P2020203	2	TUBO	STRIP	JOINT	DICHTUNG
16	P2020189		PORTELLO	SHIELD	PROTECTION	KLAPPE
17	P4010180ZT		PROTEZIONE	SHIELD	PROTECTION	SCHUTZ
18	P1020090	8	RIVETTO	RIVET	RIVET	NIET
19	P1010119	2	VITE	SCREW	VIS	SCHRAUBE
20	1020009A1	2	RONDELLA	WASHER	RONDELLE	SCHIBE
21	P2020146	2	COPERTONE	TYRE	PNEU	REIFEN
22	P01015152	2	CERCHIONE	FRONT HUB	JANTE ANT.	VORDERFELGE
23	P3030018	4	CUSCINETTO	BEARING	PALIER	LAGER
24	P1010123	2	VITE	SCREW	VIS	SCHRAUBE
25	P3040118	2	BUSSOLA	BUSHING	DOUILLE	BÜCHSE
26	P4020030	2	PORTA RUOTA ANT.	FRONT WHEEL SUPPORT	SUPPORT ROUE ANT.	RADHALTER
27	P00046252	1	LEVA ANT. SX	LEFT WHEEL LEVER	LEVIER ROUE GAUCHE	RADHEBEL L.
28	P1010125	3	VITE	SCREW	VIS	SCHRAUBE
29	P1010122	2	VITE	SCREW	VIS	SCHRAUBE
30	5040001A1	2	FASCETTA	CLAMP	CLAMP	RAPBAND
31	P2020087	2	COLLARE	RING	BAGUE	RING
32	P01032452	2	PIASTRA	PLATE	PLAQUE	PLATTE
33	P1010064	1	PRIGIONIERO	SCREW	VIS	SCHRAUBE
34	P1010070	2	VITE	SCREW	VIS	SCHRAUBE
35	P1010082	2	VITE	SCREW	VIS	SCHRAUBE
36	P2020188	1	COPRICINGHIA	BELT COVER	PROTECTION	KEILRIEMEN
37	P1060004	2	FISSATORE	WASHER	RONDELLE	SCHIBE
38	P1080018	2	PERNO	PIN	GOUPILLE	STIFT
39	P000050101	1	SCOCCA	MOWERDECK	CHÂSSIS	GEHÄUSE
40	P01032552	2	PIASTRA	PLATE	PLAQUE	PLATTE
41	P3040199	2	PIOLINO	PIN	GOUPILLE	STIFT
42	P00046452	1	LEVA ANT. DX	RIGHT WHEEL LEVER	LEVIER ROUE DROITE	RADHEBEL R.
43	1050002A1	2	DADO	NUT	ÉCROU	MUTTER
44	P01032298	1	TRAVERSINO	BRACE	REINFORCEMENT	VERSTÄRKUNG
45	1010025A1	4	VITE	SCREW	VIS	SCHRAUBE
46	P1020077	12	RIVETTO	RIVET	RIVET	NIET
47	P3040133	8	BUSSOLA	BUSHING	DOUILLE	BÜCHSE
48	P3040220	4	DISTANZIALE	SPACER	DOUILLE	DISTANZBÜCHSE
49	P02070852	1	PARAURTI	BUMPER	PARE-CHOC	STOBSTANGE
50	P1050012	2	DADO	NUT	ÉCROU	MUTTER
51	P3040126	1	BRONZINA	BUSHING	DOUILLE	BÜCHSE
52	P4010164ZN		FLANGIA GUIDA	SHAFT FLANGE	JOINT DE TRANSMISSION	FLANSCHWELLE
53	P1010116	3	VITE	SCREW	VIS	SCHRAUBE
54	P1010169		VITE	SCREW	VIS	SCHRAUBE
55	P1020067	4	RONDELLA	WASHER	RONDELLE	SCHIBE
56	1090001A1		CHIAVETTA	KEY	CLAVETTE	SCHIBENFEDER
57	P3040119	2	BUSSOLA	BUSHING	DOUILLE	BÜCHSE
58	P1020095ZT	4	RONDELLA	WASHER	RONDELLE	SCHIBE
59	P1010018	6	VITE	SCREW	VIS	SCHRAUBE
60	P01082352	1	RINFORZO INTERNO	REINFORCEMENT	RENFORT	VERSTÄRKUNG
61	P01082252	2	RINFORZO LATERALE	REINFORCEMENT	RENFORT	VERSTÄRKUNG
62	P1130003	1	GRANO	DOWEL	CHEVILLE	DÜBEL
63	P1070012	1	SEEGER	CIRCLIP	SEEGER	SEEGER
64	P1020087	2	MOLLA	SPRING	RESSORT	FEDER
65	P1080017	2	SPINA	PIN	GOUPILLE	STIFT
66	P3170016	2	FERODO	WASHER	RONDELLE	SCHIBE
67	P3040243	1	RONDELLA	WASHER	RONDELLE	SCHIBE
68	P1010159	1	VITE LAMA	BLADE SCREW	VIS DE COUTEAU	MESSERSCHRAUBE
69	P1020067	1	RONDELLA	WASHER	RONDELLE	SCHIBE
70	P4050030	1	LAMA	BLADE	COUTEAU	MESSER
71	P3040242	1	BUSSOLA LAMA	BLADE BUSHING	DOUILLE DE COUTEAU	MESSERBÜCHSE
72	P4010162	1	RONDELLA	WASHER	RONDELLE	SCHIBE
73	P4010163	1	RASAMENTO SAGOMATO	SPACER	DOUILLE	SCHIBE
74	P3040240	1	PULEGGIA	PULLEY	POULIE	RIEMENSCHIBE
75	1050002A1	2	DADO	NUT	ÉCROU	MUTTER
76	P00015652	2	RUOTA ANT. COMPL.	FRONT WHEEL ASS.Y	ROUE ANT. COMPL.	RAD KOMP.
77	P000100101	1	CESTELLO COMPLETO	GRASS BAG ASS.Y	SAC DE RAMASSAGE COMF	GRASFANGSACK KOMP.

Tav. 2

Vista assale posteriore e cambio 3 marce
Rear axle and gear box 3-speed
Essieu arrière et transmission 3 vitesses
Hinterachse und Fahrgetriebe 3-gang





REF N°	PART N°	QTY	DESCRIZIONE	DESCRIPTION	DESCRIPTION	BESCHREIBUNG
1	P3170011	2	ANELLO DI TENUTA	OIL SEAL	JOINT D'ARBRE	WELLENDICHTRING
2	P4010124	1	COPERCHIO	COVER	COUVERCLE	FEDERHALTER
3	1010018A1	1	VITE	SCREW	VIS	SCHRAUBE
4	P3010020	1	CINGHIA	TRANSMISSION BELT	COURROIRE DE TRANS.	RIEMEN
5	1010018A1	2	VITE	SCREW	VIS	SCHRAUBE
6	1020007A1	1	RONDELLA	WASHER	RONDELLE	SCHIBE
7	P3040049	1	BUSSOLA	BUSHING	DOUILLE	BÜCHSE
8	P3040244	1	PULEGGIA	PULLEY	POULIE	RIEMENSCHIBE
9	P2020162	1	LEVA	LEVER	LEVIER	HEBEL
10	1020007A1	1	RONDELLA	WASHER	RONDELLE	SCHIBE
11	P3170013	1	O-RING	SPACER	DOUILLE	ABSTANDSSTÜCK
12	P3170011	1	ANELLO DI TENUTA	OIL SEAL	JOINT D'ARBRE	WELLENDICHTRING
13	P3170010	1	ANELLO DI TENUTA	OIL SEAL	JOINT D'ARBRE	WELLENDICHTRING
14	P3030010	1	CUSCINETTO	BEARING	PALIER	LAGER
15	P1020079	1	RASAMENTO	SPACER	DOUILLE	ABSTANDSSTÜCK
16	P1070004	1	SEEGER	CIRCLIP	SEEGER	SEEGER
17	P1080015	1	SPINA	PIN	GOUPILLE	STIFT
18	P2040010	1	GOMMINO	RUBBER TUBE	TUBE DE PROTECTION	SCHUTZHÜLLE
19	P00039320	1	SCATOLA CAMBIO	GEAR BOX	BOÎTE DE VITESSE	GETRIEBE
20	P3040207	1	VITE	SCREW	VIS	SCHRAUBE
21	P1080007	1	SPINA	PIN	GOUPILLE	STIFT
22	P1020079	1	RASAMENTO	SPACER	DOUILLE	ABSTANDSSTÜCK
23	P1020053	1	RONDELLA	SPACER	DOUILLE	ABSTANDSSTÜCK
24	P3040041	1	FORCELLA	FORK	FOURCHE	GABEL
25	P1080013	1	SPINA	PIN	GOUPILLE	STIFT
26	P00065452	1	BUSSOLA	BUSHING	DOUILLE	BÜCHSE
27	P3040205	1	ALBERO	SHAFT	ARBRE	WELLE
28	P3050037	2	SUPPORTO	SUPPORT	SUPPORT	HALTER
29	1020020A1	2	RONDELLA	WASHER	RONDELLE	SCHIBE
30	1070001A1	2	SEEGER	CIRCLIP	SEEGER	SEEGER
31	P3170015	1	GUARNIZIONE	GASKET	JOINT	DICHTUNG
32	P3040206	1	DISTANZIALE	SPACER	DOUILLE	DISTANZBÜCHSE
33	P1010155	6	VITE	SCREW	VIS	SCHRAUBE
34	P00039520	1	COPERCHIO	COVER	PROTECTION	ABDECKUNG
35	P3050041	1	INGRANAGGIO	GEAR	ENGRANAGE	STIRNRAD
36	P3050040	1	INGRANAGGIO	GEAR	ENGRANAGE	STIRNRAD
37	P3050042	1	INGRANAGGIO	GEAR	ENGRANAGE	STIRNRAD
38	P00038119	1	RUOTA DENT.	GEAR	ENGRANAGE	STIRNRAD
39	P00037952	1	INNESTO DESTRO	SELECTOR COLLAR	MANCHON	SCHALTBÜCHSE
40	P3050038	1	BUSSOLA	BUSHING	DOUILLE	BÜCHSE
41	P3050046	1	INGRANAGGIO	GEAR	ENGRANAGE	STIRNRAD
42	P3050044	1	INGRANAGGIO	GEAR	ENGRANAGE	STIRNRAD
43	P3050043	1	INGRANAGGIO	GEAR	ENGRANAGE	STIRNRAD
44	P4010121	1	DISCHETTO TEMPRATO	TEMPERED RING	BAGUE EN ACIER	RING GEHÄRTET
45	P2020161	1	BUSSOLA	BUSHING	DOUILLE	BÜCHSE
46	P3020024	1	ANELLO	CIRCLIP	SEEGER	SEEGER
47	P3050046	1	GUIDA LEVA INF.	LOWER LEVER GUIDE	GUIDE INF. DE LEVIER	UNTERE FÜHRUNG
48	P4010122	1	LEVA SPINGILINGUETTA	THRUST LEVER	LEVIER DE BUTÉE	ANLAUFHEBEL
49	P3040216	1	GUIDA LEVA SUP.	UPPER LEVER GUIDE	GUIDE SUP. DE LEVIER	OBERE FÜHRUNG
50	P3050039	2	LINGUETTA SELETRICE	SELECTOR TAB	PATTE DE SELECTEUR	SCHALTFINGER
51	P3040204	1	ANELLO SPINGILINGUETTA	THRUST RING	BAGUE DE BUTÉE	ANLAUFRING
52	P3030020	4	CUSCINETTO	BEARING	PALIER	LAGER
53	P1010157	1	VITE	SCREW	VIS	SCHRAUBE
54	P4010123	1	LEVA DI TRAZIONE	TRACTION LEVER	LEVIER DE TRACTION	ANTRIEBSHEBEL
55	1050002A1	1	DADO	NUT	ÉCROU	MUTTER
56	P3170012	1	ANELLO DI TENUTA	OIL SEAL	JOINT D'ARBRE	WELLENDICHTRING
57	1010018A1	1	VITE	SCREW	VIS	SCHRAUBE
58	P4010125	1	CERCHIO	COVER	COUVERCLE	DECKEL
59	P3040293	1	ALBERO TRAZIONE	DRIVE SHAFT	ARBRE DE TRACTION	ANTRIEBSWELLE
60	P1070011	2	SEEGER	CIRCLIP	SEEGER	SEEGER
61	P3040121	2	DISTANZIALE	SPACER	DOUILLE	DISTANZBÜCHSE
62	P1020057	2	RONDELLA	SPACER	DOUILLE	ABSTANDSSTÜCK
63	P3040199	2	PIOLINO	PIN	GOUPILLE	STIFT
64	P00046352	1	LEVA POST. SX	LEFT REAR WHEEL LEVER	LEVIER ROUE POST. GAUCHE	RADHEBEL L.
65	1050002A1	1	DADO	NUT	ÉCROU	MUTTER
66	P4020122	2	PORTA RUOTA POST.	REAR WHEEL SUPPORT	SUPPORT ROUE POST.	RADHALTER
67	P1010143	2	INGRASSATORE	GREASE FITTING	GRAISSEUR	SCHMIERER
68	3030003A1	4	CUSCINETTO	BEARING	PALIER	LAGER
69	P01084952	2	COPRIRUOTA	WHEEL COVER	PROTECTION DE ROUE	RADABDECKUNG
70	P1020086	2	RIVETTO	RIVET	RIVET	NIET
71	P3040120	2	DISTANZIALE	SPACER	DOUILLE	DISTANZBÜCHSE
72	1070001A1	4	SEEGER	CIRCLIP	SEEGER	SEEGER
73	1020020A1	4	RONDELLA	WASHER	RONDELLE	SCHIBE
74	P1010121	4	VITE	SCREW	VIS	SCHRAUBE
75	P3050033	2	RUOTA DENTATA	WORM GEAR	COURONNE	KRONRAD
76	P3050034	2	PIGNONE	PINION	PIGNON	RITZEL
77	P1080010	4	SPINA	PIN	GOUPILLE	STIFT
78	P3030018	4	CUSCINETTO	BEARING	PALIER	LAGER
79	P01015252	2	CERCHIONE	REAR HUB	JANTE POST.	HINTERFELGE
80	P2020146	2	COPERTONE	TYRE	PNEU	REIFEN
81	1020009A1	2	RONDELLA	WASHER	RONDELLE	SCHIBE
82	P1010119	2	VITE	SCREW	VIS	SCHRAUBE

www.ersatzteil-service.de

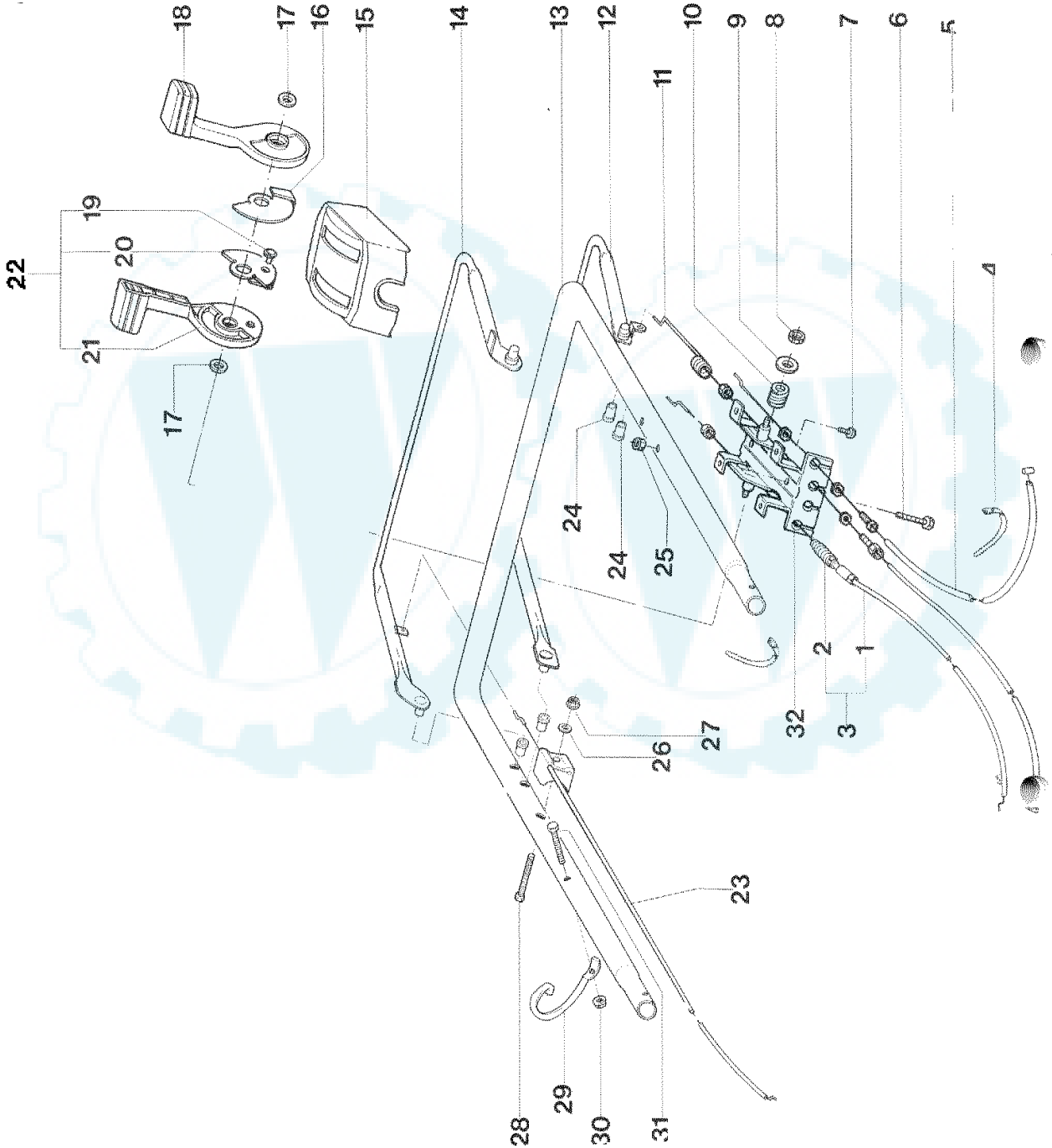
www.ersatzteilplan.de

REF. N°	PART. N°	QTY	DESCRIZIONE	DESCRIPTION	DESCRIPTION	BESCHREIBUNG
83	P303019	1	CUSCINETTO	BEARING	PALIER	LAGER
84	P101800 3	1	SPINA	PIN	COUPLE	STIFT
85	P302019	2	MOLLA	SPRING	RESSORT	FEDER
86	P 045336	2	CHIAVETTA	KEY	CLAVETTE	SCHLÜSSEL
87	P302026	1	MOLLA RICHIAMO LEVA	TRACTION SPRING	CLAVETTE	SCHLÜSSEL
88	P1020064	1	RONDINELLA	WASHER	RONDINELLE	SCHLÜSSEL
89	P1010173	1	VITE	SCREW	VIS	SCHRAUBE
90	P1080014	2	SPINA	PIN	COUPLE	STIFT
91	P3040264	1	GHIERA PER INDICATORE	COLLAR	HEUTE	ZWINGE
92	P5060003	1	INDICATORE OIL	OIL LEVEL INDICATOR	INDICATEUR NIVEAU OIL	ÖLSTANDANZEIGER
93	P00040312	1	LEVA POST. DX.	RIGHT REAR WHEEL LEVER	LEVIER ROUE POST. DROITE	RADHEBEL R.
94	1050002A1	1	DAIJO	NUT	ÉCROU	MUTTER
95	P3020199	1	POLINO	PIN	COUPLE	STIFT
96	P00015752	1	RUOTA COMPLETA	REAR WHEEL ASSY	ROUE POST. COMPL.	HINTERRAD KOMP.
97	P00078720	1	CAMBIO 3 MARCE COMP.	GEAR BOX 3 SPEED ASSY	TRANSMISSION 3 VIT. COMPL.	FAHRSTRIEBE 3-GANG KOMP.

Ihr Ersatzteilspezialist im Internet

Tav. 3

Stegola superiore e comandi
Upper handle and controls
Guidon supérieur et éléments de commande
Lenkeroberteil und Bedienungselemente



REF. N°	PART. N°	QTY	DESCRIZIONE	DESCRIPTION	DESCRIPTION	BESCHREIBUNG
1	P5010037	1	CAVO SELETTIORE MARCE	SHIFT CABLE	CÂBLE DE COMMANDE	SCHALKABEL
2	P5060010	1	SOFFIETTO	PROTECTION	PROTECTION	SCHUTZ
3	P5010067	1	CAVO SELETT. + SOFFIETTO	SHIFT CABLE + PROTECTION	CÂBLE DE COMM. + PROT.	SCHALKABEL + SCHUTZ
4	5040001A1	1	FASCETTA	CLAMP	COLLIER	RAPBAND
5	P5020064	1	CAVO ACC.	THROTTLE CABLE	CÂBLE DE GAZ	GASKABEL
6	P1010102	2	VITE	SCREW	VIS	SCHRAUBE
7	P1010061	4	VITE	SCREW	VIS	SCHRAUBE
8	1050003A1	2	DADO	NUT	ÉCROU	MUTTER
9	1020007A1	2	RONDELLA	WASHER	RONDELLE	SCHIBE
10	P3020026	2	MOLLA	SPRING	RESSORT	FEDER
11	P5010047	1	CAVO TRAZIONE	TRACTION CABLE	CÂBLE DE TRACTION	ANTRIEBSKABEL
12	P3120071VE	1	MANIGLIA TRAZ.	TRACTION LEVER	POIGNÉE DE TRACTION	ANTRIEBSHEBEL
13	P3120102VE	1	STEGOLA	HANDLEBAR	GUIDON	FÜHRUNGSHOLM
14	P4080035VE	1	MANIGLIA SYSTEM 2	SYSTEM 2 LEVER	LEVIER SYSTEM 2	SYSTEM 2 HEBEL
15	P2020065	1	SCATOLA COMANDI	CONTROL HOUSING	BOÎTE DE COMMANDE	STEUERGEHÄUSE
16	P4020147ZN	1	PIASTRINA	PLATE	PLAQUE	PLATTE
17	P1020085	2	RASAMENTO	SPACER	DOUILLE	ABASTANDSTÜCK
18	P2020168	1	LEVA ACCELERATORE	THROTTLE LEVER	LEVIER DE GAZ	GASHEBEL
19	P1020091	1	RIVETTO	RIVET	RIVET	NIET
20	P4020126	1	PIASTRINA	PLATE	PLAQUE	PLATTE
21	P2020167	1	LEVA CAMBIO	SHIFT LEVER	LEVIER DE COMMANDE	SCHALTERHEBEL
22	P00744998	1	LEVA CAMBIO COMPLETA	SHIFT LEVER COMP.	ENS. LEVIER DE COMMANDE	HEBELSATZ KPL.
23	P5010046	1	CAVO SYSTEM 2	SYSTEM 2 CABLE	CABLE SYSTEM 2	SYSTEM 2 KABEL
24	P3040123	4	BUSSOLA	BUSHING	DOUILLE	BÜCHSE
25	1050003A1	1	DADO	NUT	ÉCROU	MUTTER
26	10200013A1	1	RONDELLA	WASHER	RONDELLE	SCHIBE
27	1050003A1	1	DADO	NUT	ÉCROU	MUTTER
28	P1010126	1	VITE	SCREW	VIS	SCHRAUBE
29	P01068343	1	SUPPORTO A RICCIOLIO	STARTER HOLDER	SUPPORT	HALTER
30	1050002A1	1	DADO	NUT	ÉCROU	MUTTER
31	1010002A1	1	VITE	SCREW	VIS	SCHRAUBE
32	P4020125ZT	1	PORTA SCATOLA COM.	CONTROL HOUSING SUPPORT	SUPPORT BOÎTE DE COMPL.	HALTER FÜR STEUERGEHÄUSE

Tav. 1

Vista generale
Complete machine
Vue d'ensemble
Gesamtansicht

